

SHAREPOINT ESSENTIALS TOOLKIT

BROKEN LINK MANAGER COMPONENT BY QIPOINT

A Feature Rich Broken Link Reporting Solution for
SharePoint



“Excellent product!”

Product Reviewed by Ron Charity

August 2016

PRODUCT VALIDATION REPORT

INTRODUCTION

Many organizations have made a substantial investment in technologies such as SharePoint and the business users have embraced the technology for their everyday work. Generating thousands of sites and documents, organizations now have a user experience and maintenance issues managing the links contained with sites and embedded within documents.

In many cases, the sites and links have become outdated and their value reduced because the creators of the sites and documents have left the company or moved on within the organization. Additionally, the sheer volume of sites and documents that contain links has grown to the point where it has become unmanageable using manual day-to-day processes.

The impact to the user is a confusing experience where browsing results in errors and, as a result, users sometimes cannot carry out job tasks and lose confidence in the content. What's required to prevent this is an automated process for scanning sites and documents on a regular basis and providing a report to site and document owners so they can best determine how to update the links.

QIPoint Broken Link Manager excels at this task. It's a proven toolset for scanning documents and Sites for broken links. It can export the reports to Excel or to a SharePoint list.

This product review will cover QIPoint Broken Link Manager. In addition, we'll review the installation experience, training and support resources available to the user that help you adopt the toolset quickly.

TECHNICAL REQUIREMENTS

The following are the technical requirements for QIPoint Broken Link Manager. Note that it does not have to be installed on a SharePoint Server:

-) Supported operating systems
 - Microsoft Windows 10 (64-bit)
 - Microsoft Windows 8 (64-bit)
 - Microsoft Windows 7 (64-bit)
 - Microsoft Windows Vista SP2 (64-bit)
 - Microsoft Windows Server 2012 R2 (64-bit)

- Microsoft Windows Server 2012 (64-bit)
- Microsoft Windows Server 2008 R2 SP1 (64-bit)
- Microsoft Windows Server 2008 R2 (64-bit)
-) .Net Framework
 - 4.5
-) SharePoint versions:
 - SharePoint 2010
 - SharePoint 2013
 - SharePoint 2016
 - Office 365
-) Hardware
 - Processor: Minimum dual-core, 3GHz. Recommended quad-core 3GHz or higher. QiPoint recommends quad-core 3GHz processor or higher when scheduling more than 20 jobs at one time.
 - RAM: See individual components documentation for recommended RAM.
 - Hard disk: 300MB available hard disk space. See individual components documentation for recommended hard disk space.

You can find more technical requirements information here:
http://www.qipoint.com/broken_link_manager

EVALUATION APPROACH

QIPoint was evaluated using a Windows 10 client, SharePoint 2013 and Office 365 environment. The author utilized his own SharePoint 2013 environment and Office 365 tenancy. Additionally, the author didn't read any of the available training material so he could review the user experience in a real-world manner – learning on the go. Finally, the author utilized an evaluation copy for this review.

Note that once the initial first impression of the review was completed, the author read the training materials and referenced the online support services for review purposes.

INSTALLATION AND FIRST IMPRESSION

To install QIpoint, simply download the compressed installation file from the QIpoint site at www.qipoint.com. Browse to **Products**, select **Broken Links Manager** and click **Download Trial**. Select a location for the download such as your Downloads folder.

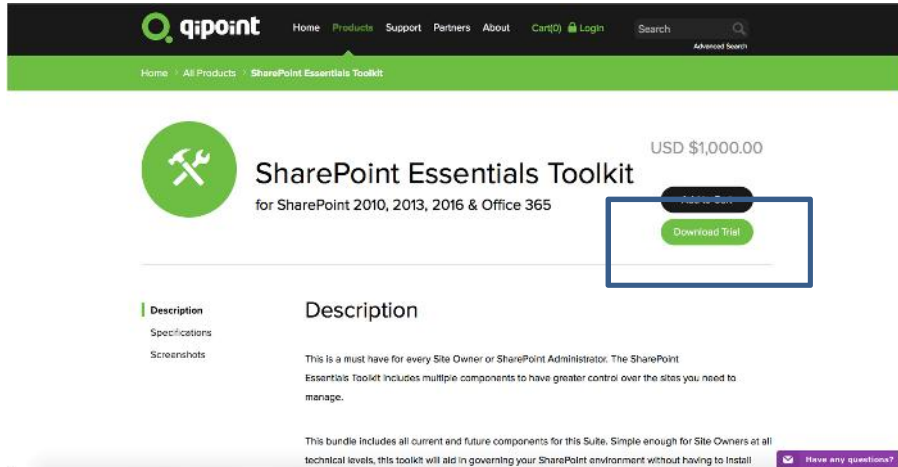


Figure 1

After you've selected the folder, download and extract the compressed file. Once extracted, right-click on the executable and select **Run as administrator**.

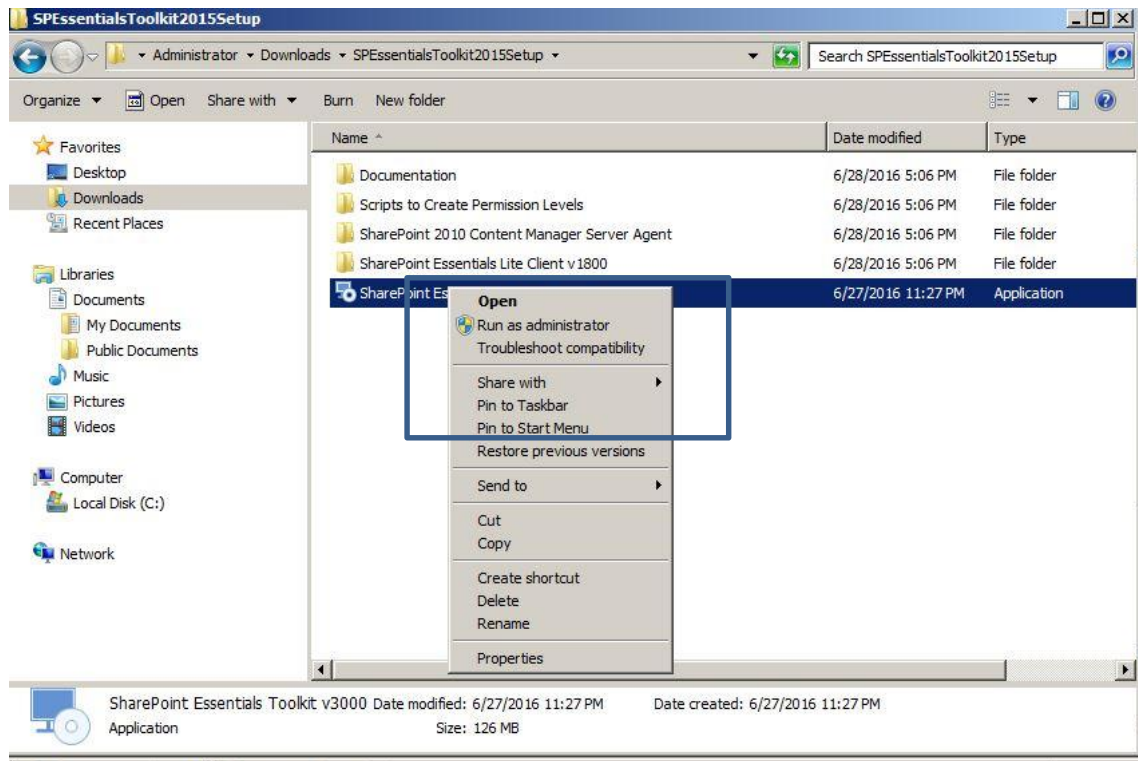


Figure 2

When the splash screen appears, set the install location, click the checkbox to accept the licensing agreement and click Install.

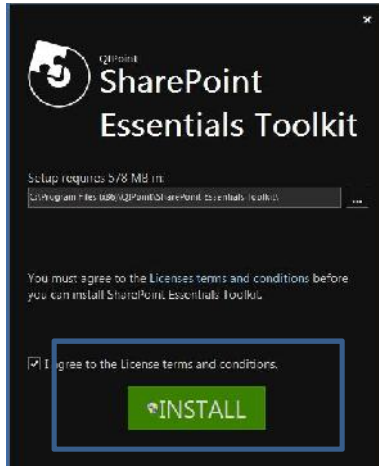


Figure 3

Once the installation completes, you have the option to select the Readme, Run Broken Link Manager or click Finish to complete the installation.



Figure 4

You are now ready to begin using QIPoint.

QIPOINT BASICS

Before getting started, I suggest that you watch the QIPoint Broken Link Manager video to review the basics of the SharePoint Essentials Toolkit (<https://www.youtube.com/watch?v=TrsE6f8i2is>) for an overview of the product. If you prefer

to read the user manual, look for *SharePoint Essentials Toolkit 2015 - User Guide.pdf*, which you'll find in the folder where you unzipped the SharePoint Essentials Toolkit download.

QIPoint follows familiar design patterns that makes it simple to use. The top area of the screen is the main menu navigation area, the left menu displays actionable options, and the middle pane for reports and the right pane for summary information.

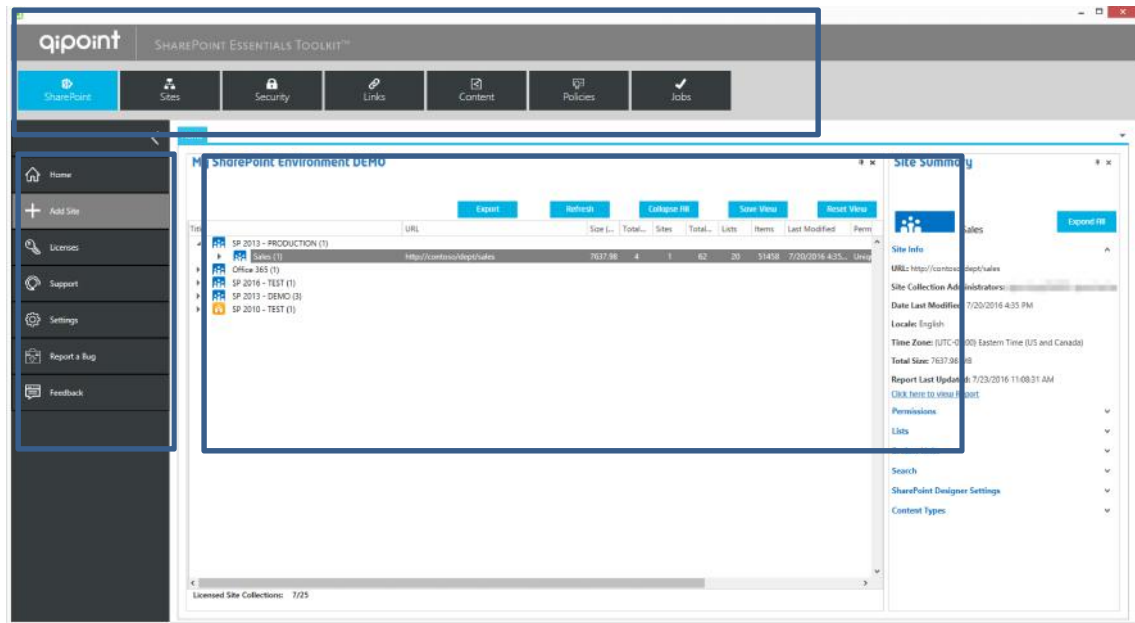


Figure 5

GETTING STARTED

To get started and scan a SharePoint site, you have two options:

- 1) Click the **Links** button from the top menu expand the **Discover** menu item and then select **New Job**.

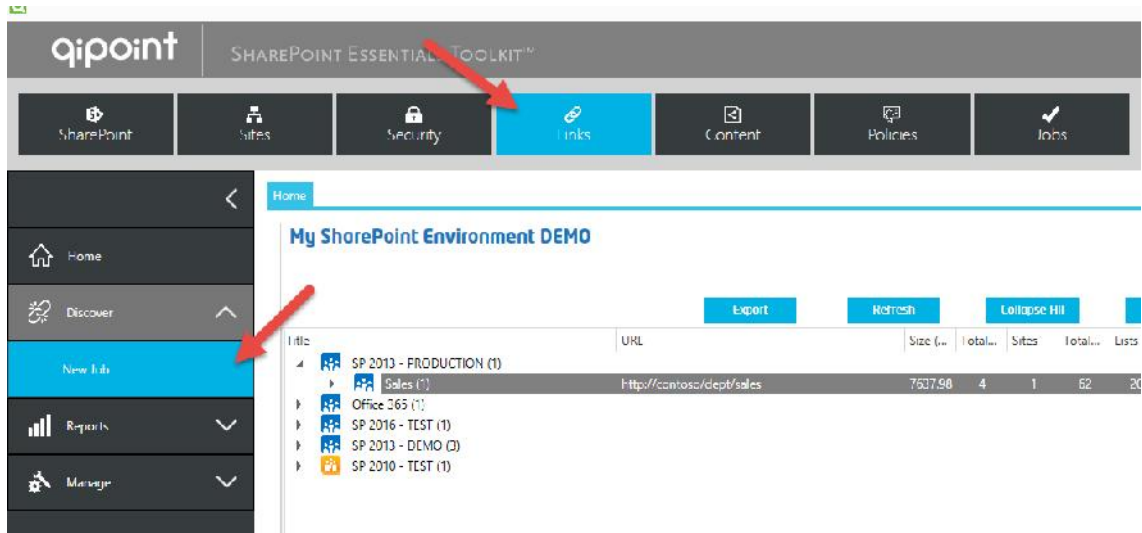


Figure 6

The following will appear:

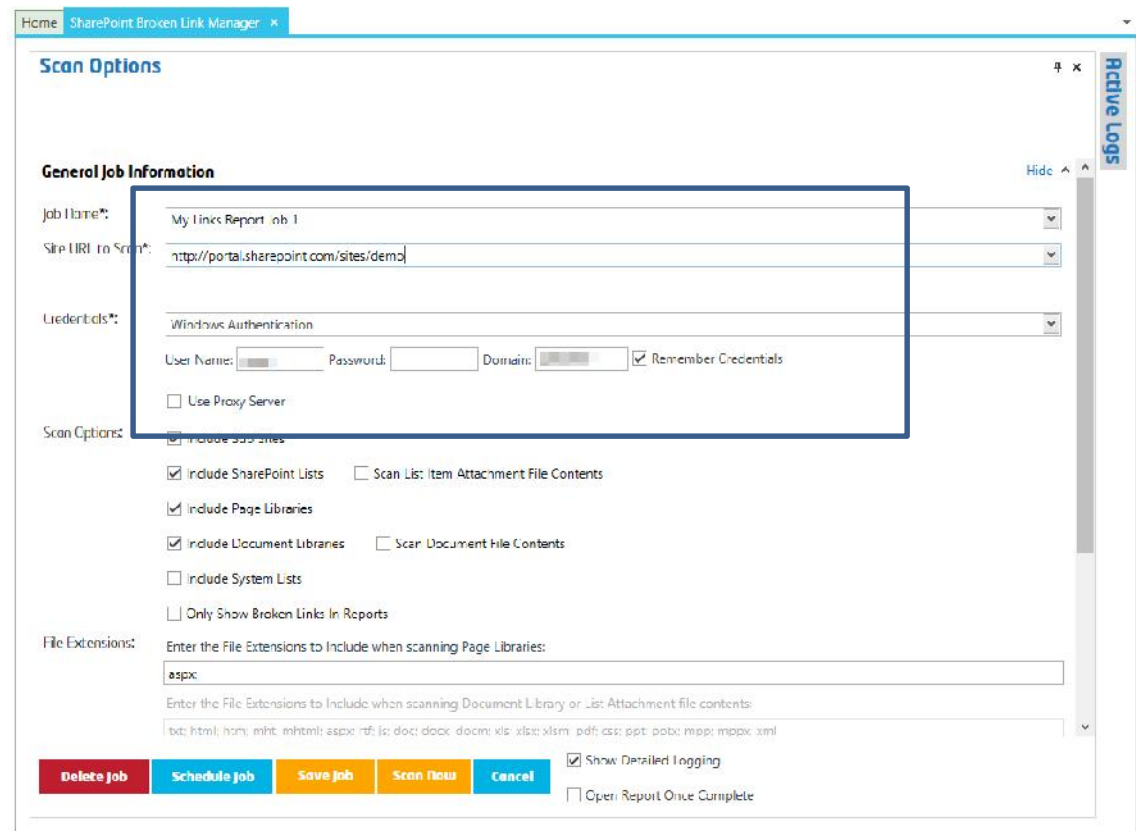


Figure 7

-) Enter a *Job Name* (e.g., SharePoint 2013 Site Marketing Site).
-) Paste the URL of your site into the *Site URL to Scan* field (e.g., <http://sp2013/sites/marketing>).
-) In the *Credentials* field enter your *User Name*, *Password* and *Domain* accordingly.
-) Save your job (Click Save Job and enter an appropriate name) then click Scan.

2) Click the **Add Site** button from the ribbon menu and then enter the URL of the site you want to add (e.g., <http://sp2013/sites/marketing>). Under *Credentials* enter your *User Name*, *Password* and *Domain* accordingly and click Add. Once added, you will be returned to the homepage. To run a scan, right-click the site you added and select **Broken Link Report**.

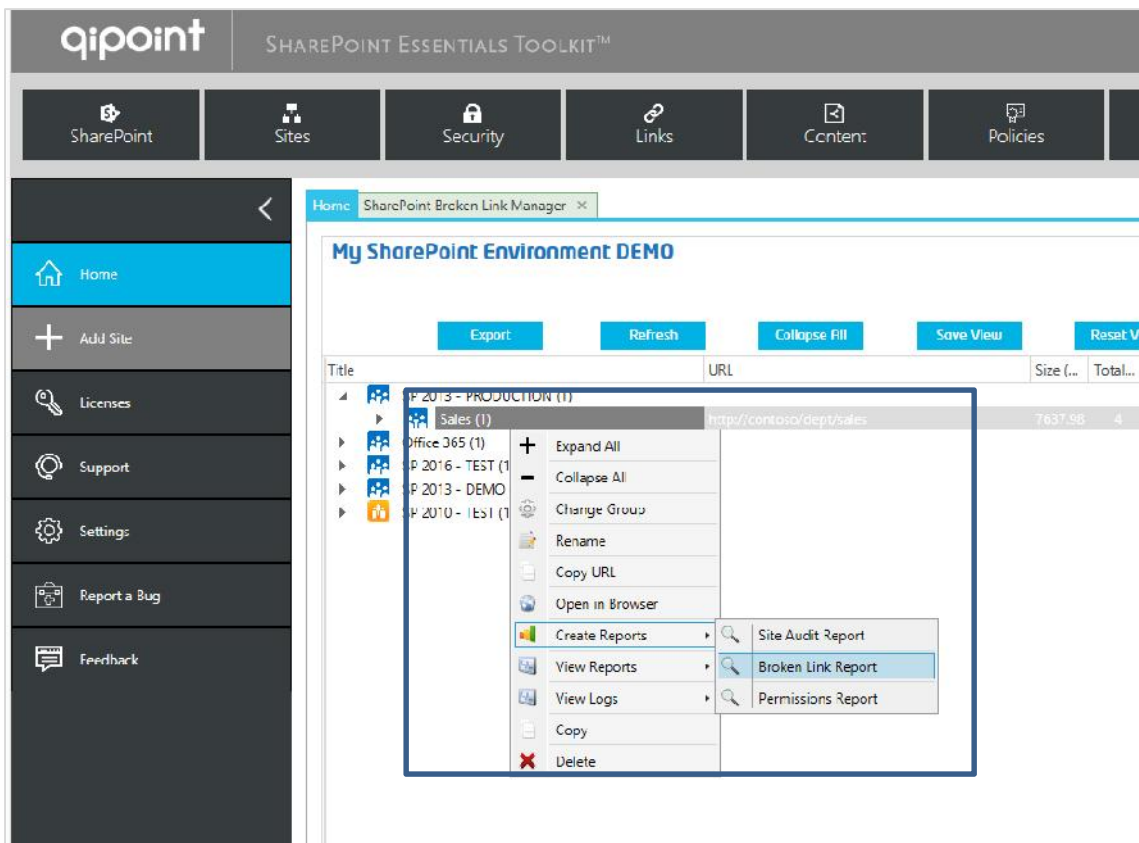


Figure 8

Note: to run batch jobs right now, hold shift or Ctrl and select multiple sites on the Home Page Dashboard, then right-click and you can run multiple jobs at once. Also note that a feature

called Differential Jobs allows users to only scan documents for broken links that have been modified since the last job was run, which helps speed up the scan process.

Once the scan has completed, QIPoint SharePoint Essentials Toolkit will generate a report that is similar to the following figure, detailing the findings. You'll see information provided about the content scanned, the broken links, and location within the site to name a few.

No.	HTTP Status Code	HTTP Status Code...	Absolute URL Tested	Link URL	HREF Display Value	Link Description	Site Collection	Site
1	200	OK	http://neptune/_layouts/15/images/favicon.ico?rev=40	/_layouts/15/images/favicon.ico?rev=40			Home Portal	Home
2	200	OK	http://neptune/_layouts/15/images/favicon.ico?rev=40	/_layouts/15/images/favicon.ico?rev=40			Home Portal	Home
3	200	OK	http://neptune/_layouts/15/1033/styles/Themable/corev15.css?rev=129a88P...	/_layouts/15/1033/styles/Themable/corev15.css?rev=129a88P...			Home Portal	Home
4	200	OK	http://neptune/_layouts/15/1033/styles/WebTaggingUI...	/_layouts/15/1033/styles/WebTaggingUI...			Home Portal	Home
5	200	OK	http://neptune/_layouts/15/1033/styles/Themable/portal.css?rev=vCjYK3e1f9...	/_layouts/15/1033/styles/Themable/portal.css?rev=vCjYK3e1f9...			Home Portal	Home
6	200	OK	http://neptune/_layouts/15/1033/styles/Suiteflow.css?	/_layouts/15/1033/styles/Suiteflow.css?rev=M1MX5e%2f54s...			Home Portal	Home
7	200	OK	http://neptune/_layouts/15/1033/initstrings.js?rev=2...	/_layouts/15/1033/initstrings.js?rev=2WdJouM2oXGy9i2n8w...			Home Portal	Home
8	200	OK	http://neptune/_layouts/15/init.js?rev=CTIEK1shYGwW...	/_layouts/15/init.js?rev=CTIEK1shYGwW4M%2B3f0e30%3D...			Home Portal	Home
9	200	OK	http://neptune/_layouts/15/clienttemplates.js?rev=Fu...	/_layouts/15/clienttemplates.js?rev=FuRZ7Cj%2B9D0oxvV...			Home Portal	Home
10	200	OK	http://neptune/_layouts/15/sp.init.js?rev=dkY2w%2B...	/_layouts/15/sp.init.js?rev=dkY2w%2B92FmMfF%2B2Bs3Tjg...			Home Portal	Home
11	200	OK	http://neptune/_layouts/15/sp.ui.libview.js?rev=ZLRB...	/_layouts/15/sp.ui.libview.js?rev=ZLRB0WrdKof%2BPLbluE...			Home Portal	Home
12	200	OK	http://neptune/_layouts/15/suiteflow.js?rev=kBljEocZ...	/_layouts/15/suiteflow.js?rev=kBljEocZTlJduP5jKjBj8Ku%3D9...			Home Portal	Home
13	200	OK	http://neptune/_layouts/15/1033/sp.res.js?rev=MbB9...	/_layouts/15/1033/sp.res.js?rev=MbB92HTBbVuf%2B1vTMH...			Home Portal	Home
14	200	OK	http://neptune/_layouts/15/sp.runtime.js?rev=VMb6gk...	/_layouts/15/sp.runtime.js?rev=VMb6gkPv9V3r9GFG2Uu%3...			Home Portal	Home
15	200	OK	http://neptune/_layouts/15/sp.userprofiles.js?rev=cx6...	/_layouts/15/sp.userprofiles.js?rev=cx6UB8P%2B9P00FLkGekL...			Home Portal	Home
16	200	OK	http://neptune/_layouts/15/1033/profilebrowser.js?rev=...	/_layouts/15/1033/profilebrowser.js?rev=qufF91wVc1...			Home Portal	Home
17	200	OK	http://neptune/_layouts/15/sp.ui.mgr.common.js?rev=...	/_layouts/15/sp.ui.mgr.common.js?rev=plIMBCoD9V%2FYG7...			Home Portal	Home
18	200	OK	http://neptune/_layouts/15/sp.ui.mgr.common.js?rev=kPtl...	/_layouts/15/sp.ui.mgr.common.js?rev=kPtlbFuKDPuGw%2B7%2...			Home Portal	Home
19	200	OK	http://neptune/_layouts/15/sp.datetime.js?rev=Qm...	/_layouts/15/sp.datetime.js?rev=QmxxvIDPMDk8OFFpPg%2...			Home Portal	Home
20	200	OK	http://neptune/_v1_bin/spadica.aspx	/_v1_bin/spadica.aspx			Home Portal	Home
21	200	OK	http://neptune/_layouts/15/latfeed.aspx?list=b66ac...	/_layouts/15/latfeed.aspx?list=b66ac85%2D3594%2D4b64%...		Site Pages	Home Portal	Home
22	200	OK	http://neptune/_layouts/15/images/spcommon.png?re...	/_layouts/15/images/spcommon.png?rev=40			Home Portal	Home
23	200	OK	http://neptune/_layouts/15/images/favicon.ico?rev=40	/_layouts/15/images/favicon.ico?rev=40			Home Portal	Home
24	200	OK	http://neptune/_layouts/15/images/spcommon.png?re...	/_layouts/15/images/spcommon.png?rev=40			Home Portal	Home
25	200	OK	http://neptune/_layouts/15/images/siteicon.png?rev=...	/_layouts/15/images/siteicon.png?rev=40			Home Portal	Home
26	200	OK	http://neptune/_layouts/15/images/spcommon.png?re...	/_layouts/15/images/spcommon.png?rev=40			Home Portal	Home
27	200	OK	http://neptune/_layouts/15/images/spcommon.png?re...	/_layouts/15/images/spcommon.png?rev=40			Home Portal	Home
28	200	OK	http://neptune/_layouts/15/images/spcommon.png?re...	/_layouts/15/images/spcommon.png?rev=40			Home Portal	Home

Figure 9

You can use built-in views to quickly find the broken links in your SharePoint site and identify the pages or documents in which they are located.

View: Broken Links by Document Save View Delete Reset Default View Export to MS Excel Export

List ▲ Item Title ▲ HTTP Status Code ▲

No.	Group	HTTP Status Code...	Link Type	Link URL	Site URL	Item URL	Auth
▶ List: Documents (16)							
▲ List: Site Pages (2)							
▶ Item Title: Home.aspx (4)							
▶ HTTP Status Code: 200 (42)							
▶ HTTP Status Code: 404 (1)							
▶ HTTP Status Code: 408 (1)							
▶ HTTP Status Code: 503 (4)							
	SP 2013 - PROD...	Service Unavailable	ContentFilterWeb...	http://www.somebrokenli...	http://contoso/sites/dem...	http://contoso/site...	SHAF
	SP 2013 - PROD...	Service Unavailable	ScriptEditorWebPart	http://www.qpoint1.com	http://contoso/sites/dem...	http://contoso/site...	SHAF
	SP 2013 - PROD...	Service Unavailable	ScriptEditorWebPart	http://www.qpoint2.com	http://contoso/sites/dem...	http://contoso/site...	SHAF
	SP 2013 - PROD...	Service Unavailable	ScriptEditorWebPart	http://www.qpoint3.com	http://contoso/sites/dem...	http://contoso/site...	SHAF
▶ Item Title: How To Use This Library.aspx (2)							

Figure 10

You can export the results to an Excel spreadsheet, CSV or a SharePoint List. These options provide you with flexibility when providing reports for site owners for link remediation, especially after a migration.

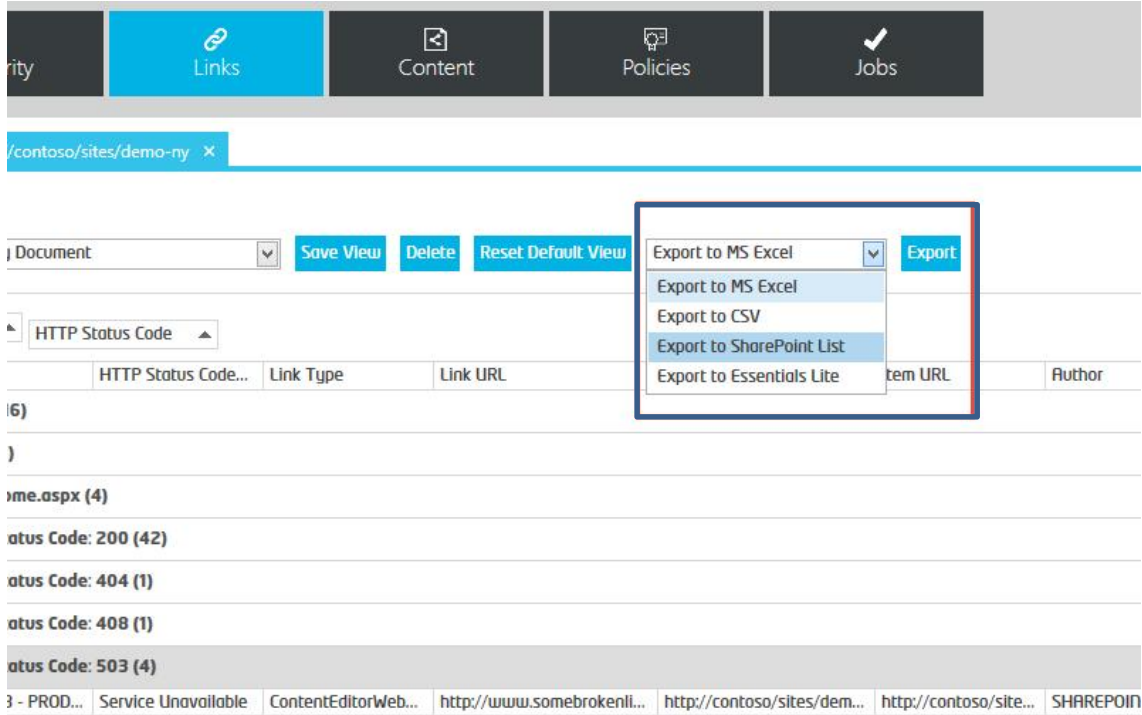


Figure 11

A very helpful export destination is the SharePoint list. By selecting this option, the SharePoint Essentials Toolkit will create a list and populate it with the report data. With this feature, site owners could be provided with a simple resource they can use to remediate broken links.

For the SharePoint list option, simply select Export to SharePoint list, enter the site URL and click OK.

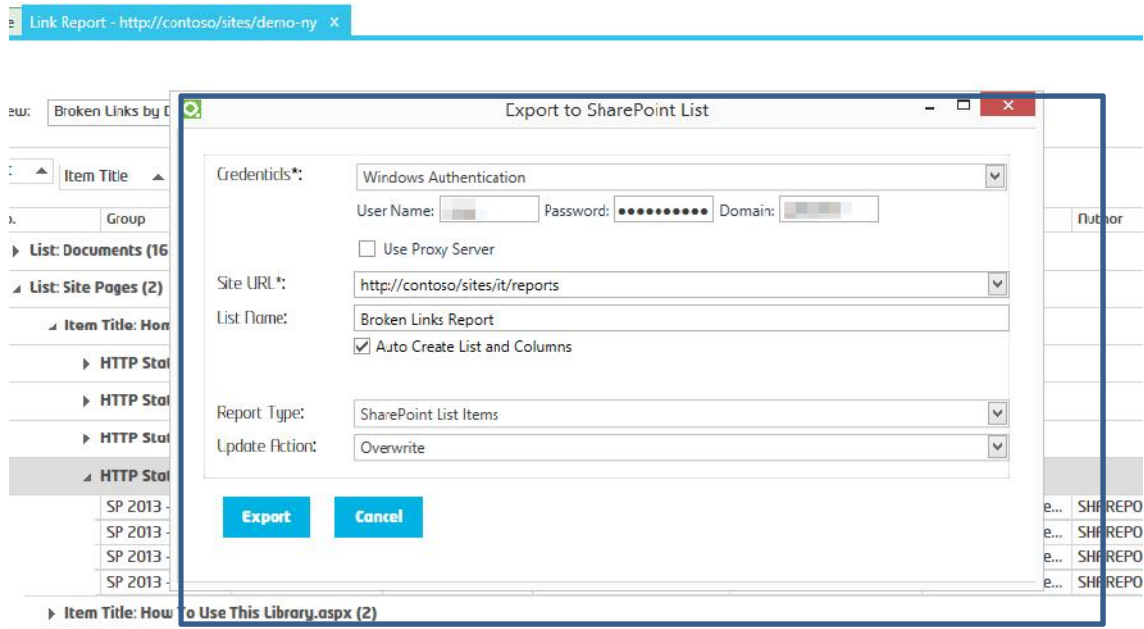


Figure 12

Once the list is created, it appears in the left navigation of the site and can be accessed by Site members. Site owners can assign broken link remediation to site members and track progress.

To help with upkeep, this list can be updated using the SharePoint Essentials Toolkit on an ongoing basis to make the sites user experience is maximized.

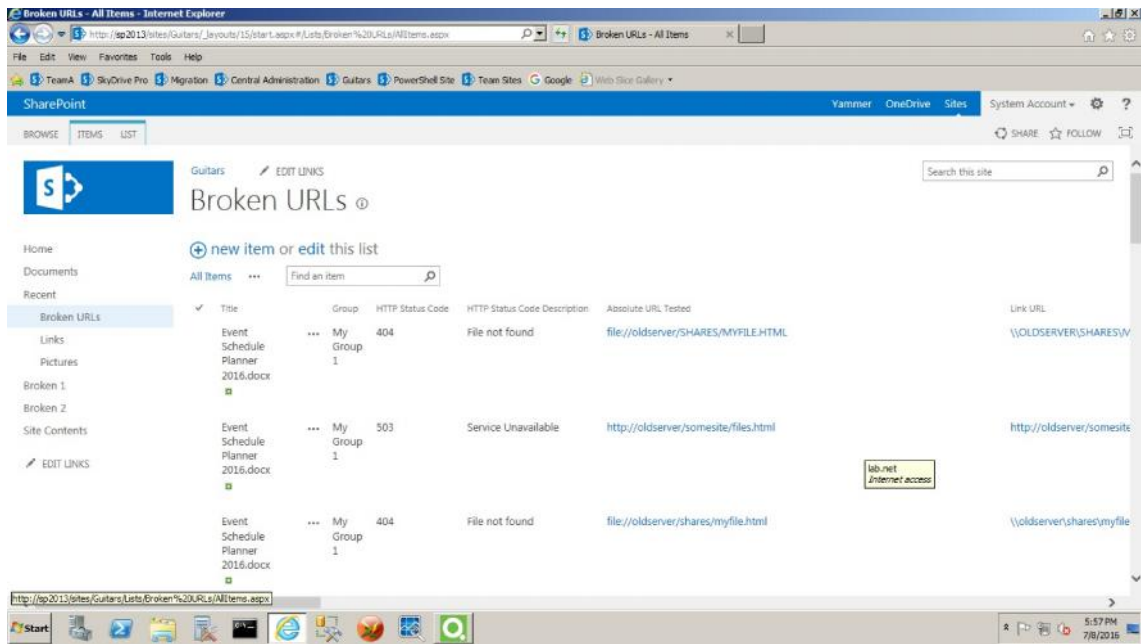


Figure 13

GRAPHICAL REPORTS

You can also view the history of broken links in your site using the “Historical Report” below:

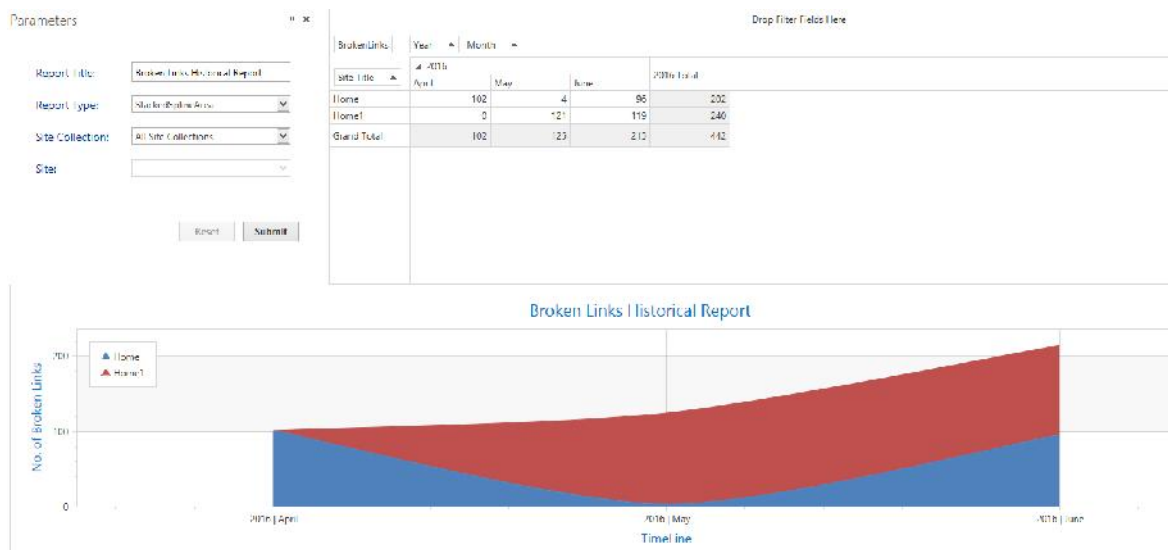


Figure 14

This allows users to see the increase or (hopefully) decrease in number of broken links in the

environment by site. This report can then be exported to PDF or Microsoft Word.

There is also a “Links Report” to show the current state of links. The image below shows two sites that have had reports generated for them, the number of broken links are identified by labels in the report. The tool picks up the report data automatically when the report is opened. There is also a bar chart and bubble chart. Below is the pie chart option:

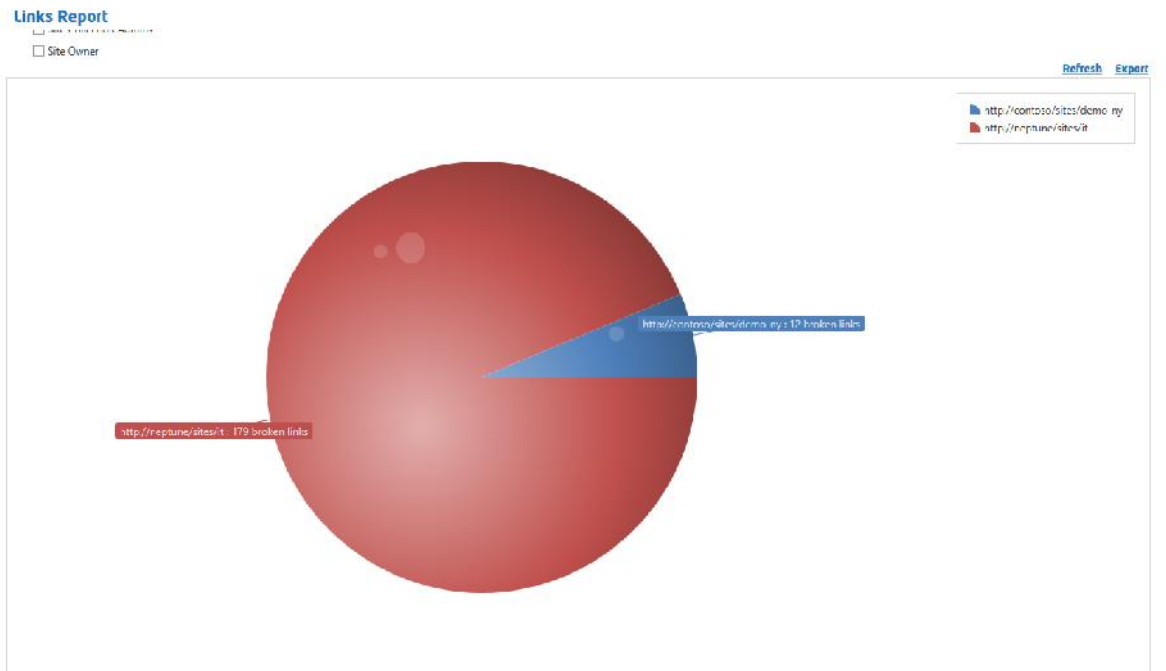


Figure 15

FIND/REPLACE

After discovering the broken links in your environment and getting an idea of what needs to be fixed, you can then enter or import a list of *replacement* links into the tool to fix them automatically. Note that QIPoint also includes support for correcting and detecting FTP, UNC / file share paths and normal HTTP and HTTPS paths/links.

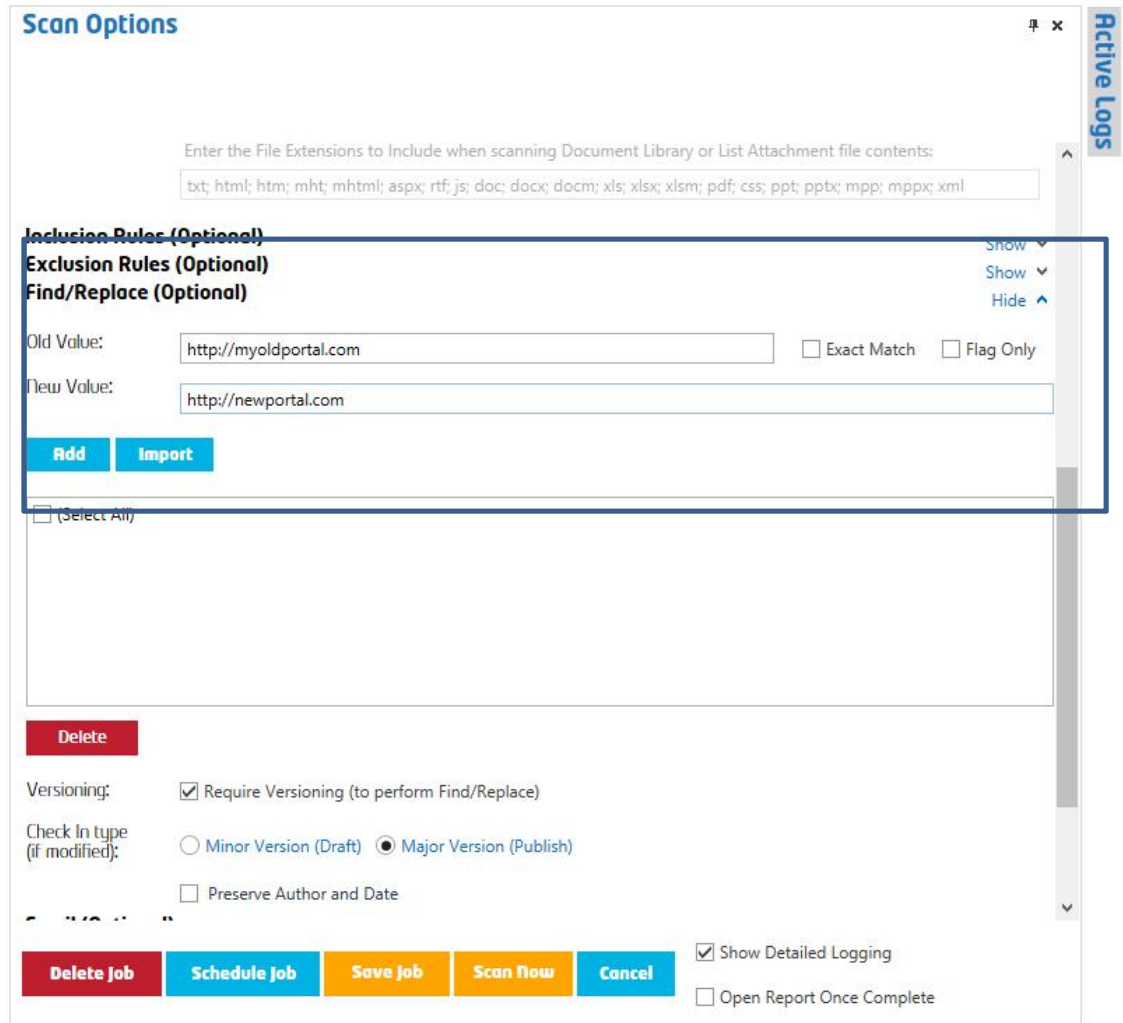


Figure 16

VS. COMPETITORS

Broken Link Manager offers many features that you will not find in other 3rd-party competitor tools. These features include:

-) Ability to scan/find/replace within file contents, such as links inside PDF and MS Office files, and referenced CSS and JavaScript files
-) Support for almost all OOTB (out-of-the-box) SharePoint web parts such as Image Viewer and Summary Links web parts that are not supported by other tools
-) Ability to perform differential scans to only scan files that have changed since the last job

-) Supports replacement of tooltips in HTML tags and metadata
-) Generate graphical and detailed reports on links
-) Historical reports
-) Granular filtering to allow you to only scan certain folders, lists or libraries
-) Built-in scheduler to automate jobs

SUMMARY

There is much more functionality in the SharePoint Essentials Toolkit (by QIPoint) that we didn't cover in this review. If you want to learn more about the product, please explore the links provided in the next section of this document.

SUPPORT

The following support is available to help you get started:

-) Demo – <https://www.youtube.com/watch?v=TrsE6f8i2is>
-) Trial – http://www.qipoint.com/broken_link_manager
-) Training videos – <https://www.youtube.com/watch?v=TrsE6f8i2is>
-) Quick start – Included in download package
-) Manual – Contained in the ZIP file with install file
-) Blog – <https://blog.qipoint.com>
-) Support – <http://support.qipoint.com>
-) Discussions – <http://support.qipoint.com>
-) FAQ – <http://www.qipoint.com/faq>

SHAREPOINT ESSENTIALS TOOLKIT FEATURE ROADMAP

According to QIPoint, the SharePoint Essentials Toolkit (Enterprise Suite) will be expanding its set of features (within existing components – including Broken Link Manager) and adding new components over the remaining quarter of 2016 and into 2017.

Here are a few enhancements to look out for in the near future:

- J) *Site Auditing Activity Feature* – This new feature will improve the Site & List Auditing component to bring usage statistical reports such as most viewed documents and sites. It will also provide reports on recent changes to files and lists.
- J) *Content Manager Bulk Edit and Classify Feature* – This new feature will allow users to update metadata of items and documents in bulk. For example, you can update Content Types and metadata values in large lists.
- J) *New Reporting UI improvements* – There will be a handful of new graphical reports added to the toolkit. All new features and components will be a free update for users who have the SharePoint Essentials Toolkit license.

RATING

The following is a summary of the review that was performed over a 5-day period.

Criteria	Rating	Comments
Download and installation	5/5	Ensure prerequisites are in place QIPoint will install quickly.
User interface / ease of use	5/5	Follows Windows and Office design patterns.
Mac/Windows experience	3/5	Windows only but a strong product; Macs are common in the workplace now and should be supported.
Supported file types	5/5	PDF, MS Office, MS Project, CSS, JS, HTML, text, XML and more file types.
Scanning optimization	5/5	Ability to scan only documents modified since previous scan. Multi-threaded Jobs – Users can run jobs in parallel

		using a <i>Multi-site selection</i> option and which reduces the time to scan larger sites.
Customizable / SDK	4/5	SDK available early 2017.
Report export option	5/5	Several options include Office and SharePoint Lists.
SharePoint integration	5/5	Integrates well; uses CSOM to communicate with SharePoint.
Support	5/5	Many options available such as manuals, support center and blogs.
Overall	5/5	Great product, easy to use, loaded with features.

COMPANY OVERVIEW

QIPoint™ is a privately held U.S. company based out of Jersey City, NJ. They have an A+ Rating with the (BBB) Better Business Bureau and are registered with Dun and Bradstreet.

They design, build and sell enterprise-level software applications that help organizations save time and money. Through the use of practical technology, their services and tools will help automate and streamline business processes, minimizing data entry, automating reports and reducing spreadsheet dependence. All support members hold at least two Microsoft accredited SharePoint certifications to ensure you are getting quality solutions providing you with best practices, not best guesses.

Head Office
 2500 Plaza 5, 25th floor
 Harborside Financial Center

Jersey City, NJ 07311

More information can be found here <http://www.qipoint.com>

SOME OF THEIR EXISTING CUSTOMERS



SUMMARY

SharePoint is an excellent platform for providing collaboration, social, BI and mobile services. It can also be labor intensive to manage content ongoing without the use of toolsets and automation. Adding the SharePoint Essentials Toolkit enriches SharePoint's content management experience by providing an easy to use tool for scanning links broken links and reporting. The SharePoint Essentials Toolkit (by QIPoint) is easy to use; scans can be configured and run within minutes. Should you require support, QIPoint has several options to help get started with their product. The authors questions were answered within a 24-hour period through the QIPoint support services.

If you have feedback, questions or want to share your experience, contact me at roncharity@gmail.com.

PRODUCT REVIEWED BY RON CHARITY

Ron Charity is an enterprise architect and has worked in consulting for 20-plus years and managed large SharePoint environments for 5 years. He has worked in the USA, Canada, Australia and Europe – providing him with a diverse background and global perspective on IT. Ron has worked with SharePoint since its 2001 beta and is focused on governance, collaboration, search, social, mobility, and document management. He has written articles on governance, collaboration, document management, and mobility.

PRODUCT VALIDATION REPORT

The Product Validation Report produced by SharePointReviews.com in collaboration with industry's most renowned experts delivers independent validation of vendor product capabilities and provides insights on how the product compliments customers' native Microsoft SharePoint deployments. This report should not be treated as a replacement for the evaluation process that you would normally conduct before making a purchasing decision, but it will provide independent information on the product to help you with your decision. This report includes opinions of the reviewer(s), and neither SharePointReviews.com nor the reviewers are responsible for any issues that may arise during your usage of the product. This research was sponsored by QIPoint.